

CONSULTRAIN MANAGEMENT SERVICES



24A, Lake Road, Kolkata - 700029
Phone : +33 79635503/9830278995
www.consultrainmanagement.in



About Us



Consultrain Management Services is an ISO 9001:2015 certified company & Registered under MSME Govt. of India was founded in 1995 by a group of professionals presently engaged in three main verticals to support manufacturing as well as service industries of India and abroad.

Our services are now combined to help enable our clients to face today's challenges, which helps in achieving worthwhile proficiency in improvement on operations and also Reinventing tomorrow is our promise towards a positive move in value addition.

The CMS approach is structured, as well as agile to assist clients in various ways of their life cycle. Our credentials across our clientele echo our success in understanding the business context. Being an independent advisory team with extensive knowledge and experience, CMS can help you to handle today's challenge, achieve what you have set out for tomorrow.

While our professionals can provide a variety of alternatives to cater to our clients' needs, we have in addition customized approaches catering to specific performance and technology related business challenges.

Consultrain Management Services provides clear, practical advice to drive transformation of organisations.

Our subject matter specialists can offer valuable insights and various alternatives that help our clients maintain the competitive edge in the longer term as well.

The company is being headed by Mrs. Sanchita Bhattacharya, MBA having extensive and varied experience for more than 25 years in training and consultancy services for different Management systems. She was awarded as Best Women Entrepreneur on 2010 by IIF.

We are an associated group of well-qualified professionals having vast experience in their respective fields. A couple of Metallurgical, Mechanical, Chemical, Electrical, Electronics Engineers, Pharmacologists and Technical experts, with adequate knowledge and experience in their respective fields are associated with us.



Vision

We believe and stand committed, to enhance the profitability of our partners, be a facilitator for continual improvement of their organization and thereby meeting exceeding their customer's expectation.

Mission

To help our customers to achieve their Business Objectives and enhance their Business Profitability, by providing Innovative, Best Consulting Solutions & Services.

Values

Mutually Beneficial relationships

- Enrich & Enhance
- Listen, respect, and value to others
- Build long-term relationships of trust

Commitment and Accountability

- Be responsible
- Achieve growth
- Do the right thing, every time

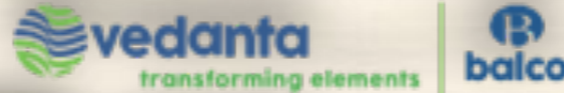
Learning & Sharing

- Continual development of our capabilities and talents
- Create opportunities for career growth

Excellence in all we do

- Enhance quality and sustainability
- Deliver innovative solutions
- Encourage new ideas and diverse ways of thinking

Our Valued Customers

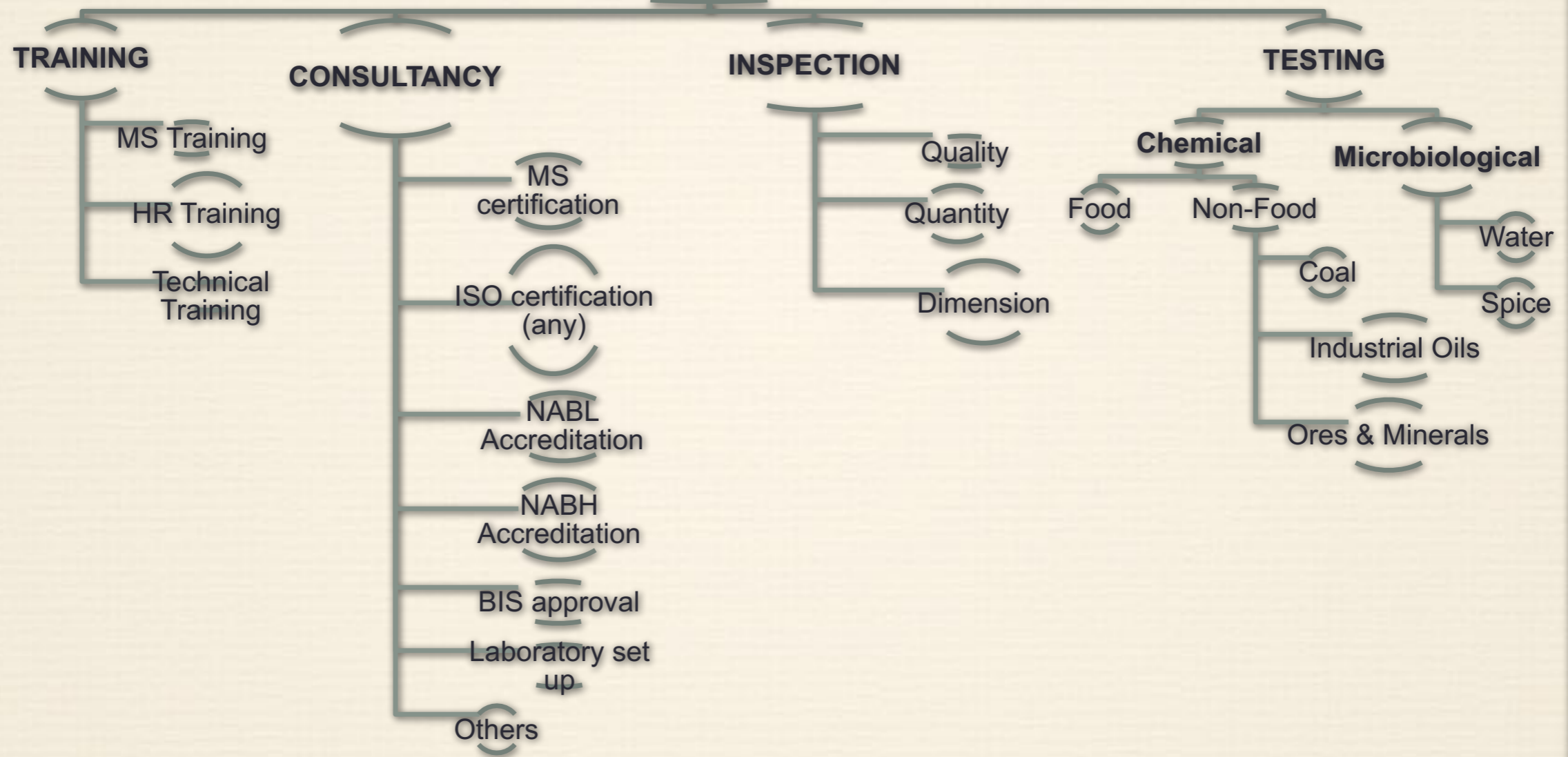


CMS Activities



CONSULTRAIN MANAGEMENT SERVICES

(ISO 9001:2015 certified & MSME)



Our Verticals



INSPECTION



CONSULTING



TRAINING



TESTING
SERVICES

CMS GROUP

TRAINING & CONSULTANCY



TRAINING



- Occupational Health & Safety
- Quality Management
- Environmental Management
- Energy Management
- Food Safety Management
- Social Development
- IT System Management
- Hospital Accreditation
- Laboratory Accreditation
- Asset Management
- Data Analysis
- Risk Assessment
- Estimation of UoM



Building capabilities....

**200 + training programs....
in more than 3 countries....**

**trained more than 2000 persons
in last 3 years....**

Consultancy



ISO Standards

- ISO 9001:2015 (Quality Management System),
- ISO 14001:2015 (Environmental Management System),
- ISO 45001:2018 (Occupational Health & Safety Management System)
- ISO 22000:2005 (Food Safety Management System)
- ISO 27001:2018 (Information Security Management System)
- ISO/IEC 17025: 2017 (NABL Accreditation)
- ISO 15189:2012 (NABL Accreditation)
- ISO/IEC 17020:2012
- ISO/IEC 17024:2012
- ISO 13485:2016 (Medical Device)



Non ISO Standards

- NABH Accreditation
- Good Manufacturing Practice (GMP),
- Good Laboratory Practices (GLP),
- HACCP (Hazard analysis and Critical Control Point),
- FSSC 22000
- BRC Global Standard
- CE Marking,
- KITE Marking,
- GOST R Certification,
- Sustainability management
- SA 8000 (Social Accountability),
- BSCI certification,
- University Accreditation (NAAC, NBA),
- BIS Approval



Technical Consultancy

- Mechanical, Chemical & Microbiological Testing Laboratory Set up,
- Calibration Laboratory set up,
- Waste Management
- Rain water harvesting,
- Productivity assessment,
- Start up set

Quality



- ✓ **ISO 9001** Quality Management System Awareness/ Foundation/ Internal Auditor/ Implementer
- ✓ **ISO/TS 16949** Quality Management System for Automotive Industries Awareness/ Internal Auditor/ Implementer
- ✓ **ISO 29001** Quality Management System for Oil & Gas Awareness/ Internal Auditor/ Implementer
- ✓ **ISO/IEC 17025** Quality Management System for Laboratory Awareness/ Internal Auditor/ Implementer
- ✓ **ISO 15385** Quality Management System for Laboratory Awareness/ Implementer
- ✓ **ISO 13485** Quality Management System for Medical Device Awareness/ Implementer
- Business Excellence Maturity Model
- Cost of Poor Quality
- Customer Satisfaction & Complaint Management
- Business Continuity Management
- Quality Circles
- Lean Manufacturing
- Total Quality management
- 5 'S' – Office / Manufacturing
- 7 New QC Tools
- TPM Crisis management and product recall
- Kaizen
- JIT
- Six Sigma
- Statistical process control

Laboratory Accreditation



- Laboratory accreditation as per ISO/IEC 17025, ISO 15189
- GLP /GMP
- Laboratory Set up
- Testing Lab - Food, Civil, Metal, Rubber, Textiles, Forensic, NDPS, Drugs& pharmaceuticals, Coal, Electrical, Biological, NDT, etc
- Calibration Lab - Mechanical, Electro technical, Fluid flow, etc
- Medical Lab



Hospital Accreditation



- ❖ NABH Accreditation
 - Entry Level Accreditation
 - Accreditation Level
- ❖ Joint Commission International (JCI) Accreditation



Social Responsibility



- SA 8000 Awareness/ Foundation/
Internal Auditor/ Implementer
- Social Management System (SMS)
Awareness/ Implementer/ Auditor
- Social Compliance on International
Standards
- ISO 26000 Awareness/ Foundation/
Internal Auditor/ Implementer
- Corporate Social Responsibility
- Social Legal Requirement
- Social Impact Assessment
- Labour Laws



Environment & Energy



- **ISO 14001-Environment**
Management System Awareness/
Foundation/ Internal Auditor/
Implementer
- **ISO 50001-Energy Management**
System (EnMS) Awareness/
Foundation/ Internal Auditor/
Implementer
- Waste Management
- **BS EN 16001-Energy**
Management System Awareness/
Foundation/ Internal Auditor/
Implementer
- Environment Impact Assessment
- Environment Legal Requirement
- Water Management



Health & Safety



- ISO 45001 Awareness/ Implementer / Internal Auditor
- Chemical Safety
- Electrical Safety
- Handling Hazardous Chemicals
- Fire Risk Assessment
- Fire Prevention & Protection
- Work Permit System
- Work at Height & Scaffolding
- Safe Lifting Operation
- Confined Space Safety
- Hot Work
- Forklift Operation
- Accident Incident Analysis; Prevention; and Reporting,
- Legal Register
- Failure Mode & Effect Analysis(FMEA)
- Risk Management
- Job Safety Analysis
- Safe handling of LPG/Propane Gas
- Ergonomics
- Health and Safety Management in Construction
- Contractor Safety Management
- Behaviour Based Safety. (BBS)
- Root Cause Failure Analysis
- Hazard Identification & Risk Analysis (HIRA)
- OHS Legal
- Occupational Safety and Health Audit for Statutory Compliance
- Safety for workmen and contract workmen
- Emergency preparedness
- Fatality Prevention Element



Food Safety



- **ISO 22000** Food Safety Management Awareness/ Internal Auditor/ Implementer
- GMP/GHP
- Cleaning and sanitation
- Personal hygiene practices
- Microorganisms of importance in beverage plant
- Food defense
- Management of allergens
- FSSC 22000
- Vendor assessment and vendor management
- HACCP/TACCP/VACCP
- Food Safety Risk Assessment and determination of Critical Control Points
- Pre-requisite Programs (PRP)
- BRC Global Standards



Information & Communication Technology



- **ISO 20000** Information Technology Service Management Awareness/ Foundation/ Internal Auditor/ Implementer
- **ISO 27001** Information Security Management Awareness/ Foundation/ Internal Auditor/ Implementer/ Controls
- **TL9000** Awareness/ Foundation/ Internal Auditor/ Implementer
- **Business Continuity Management Disaster Recovery Management**



Financial Management



- **Business Analytics**
- **Finance** Module Management Awareness/ Foundation
- **Taxation** Awareness/ Foundation Implementer/ Controls
- **GST** management Awareness/ Foundation
- **ERP** Installation
- **Risk** assessment & controls
- **Asset** Management



INSPECTION



- Quality Supervision/Inspection
- Sourcing & Expediting
- Project monitoring & control
- Loading & Unloading Inspection
- Quality & Quantity check
- Preparation of QAP
- Checklist based assessment

ASSESSMENT



- Protocol Audit
- Vendor development
- Logistic assessment
- BIS approval
- Laboratory setup
- Procurement Management





Delivering customized
'Solutions' for
Respective
Business Challenges

CONSULTRAIN
management services

Consultrain Management Services

24A Lake Road, Kolkata 700 029

Board +91 33 24661461 / 4064 4332

Mobile : +91 9830278995/9836209099

Email: sanchita.cms@gmail.com

Website : www.consultrainmanagement.in